

# pralukh

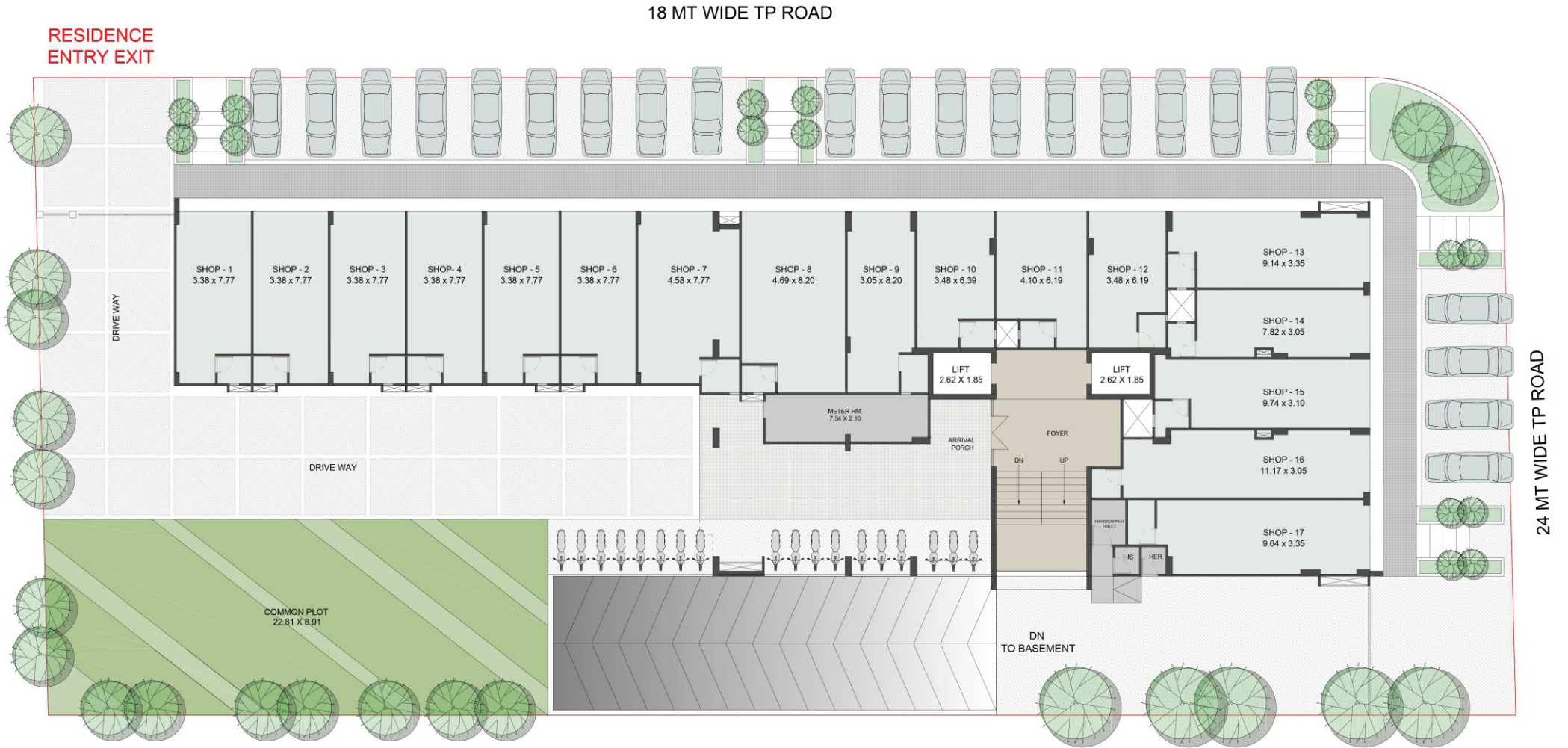
3 BHK Living Space

# 52

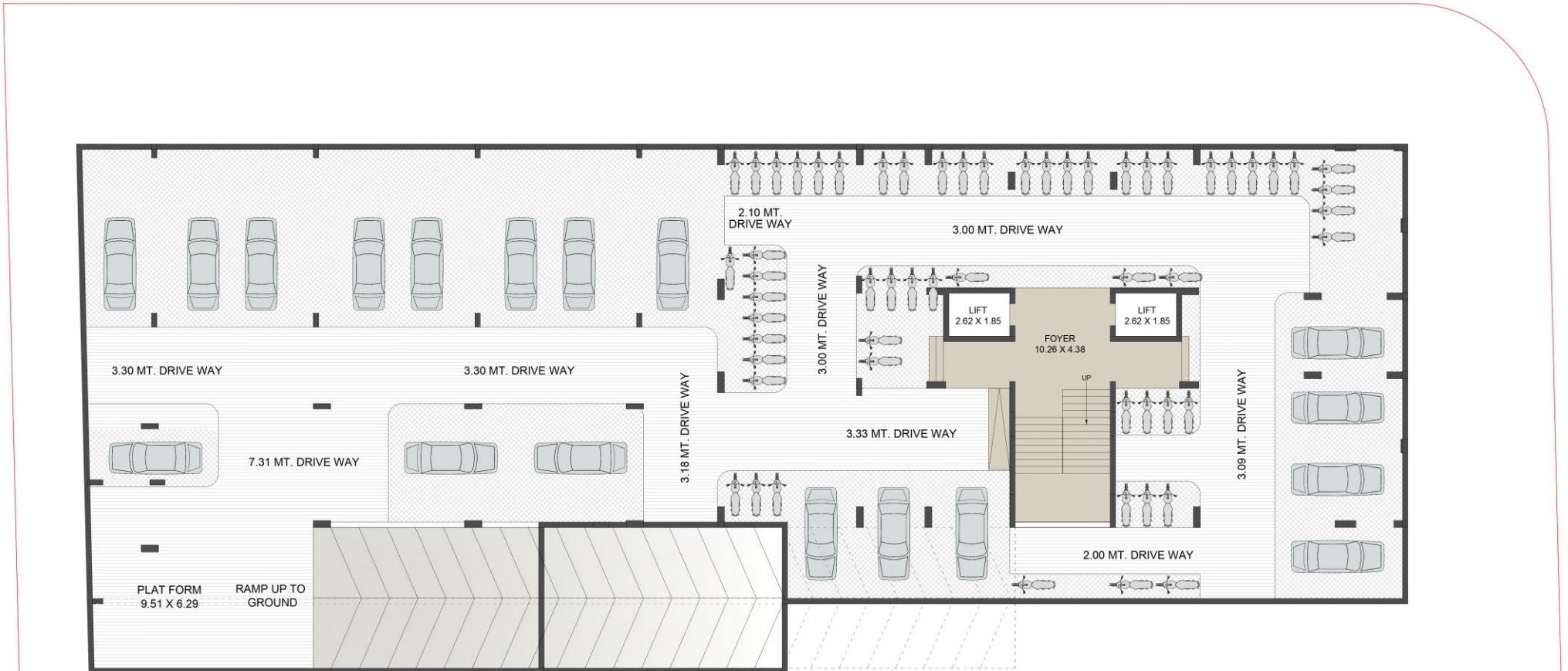








## GROUND FLOOR



## BASEMENT FLOOR





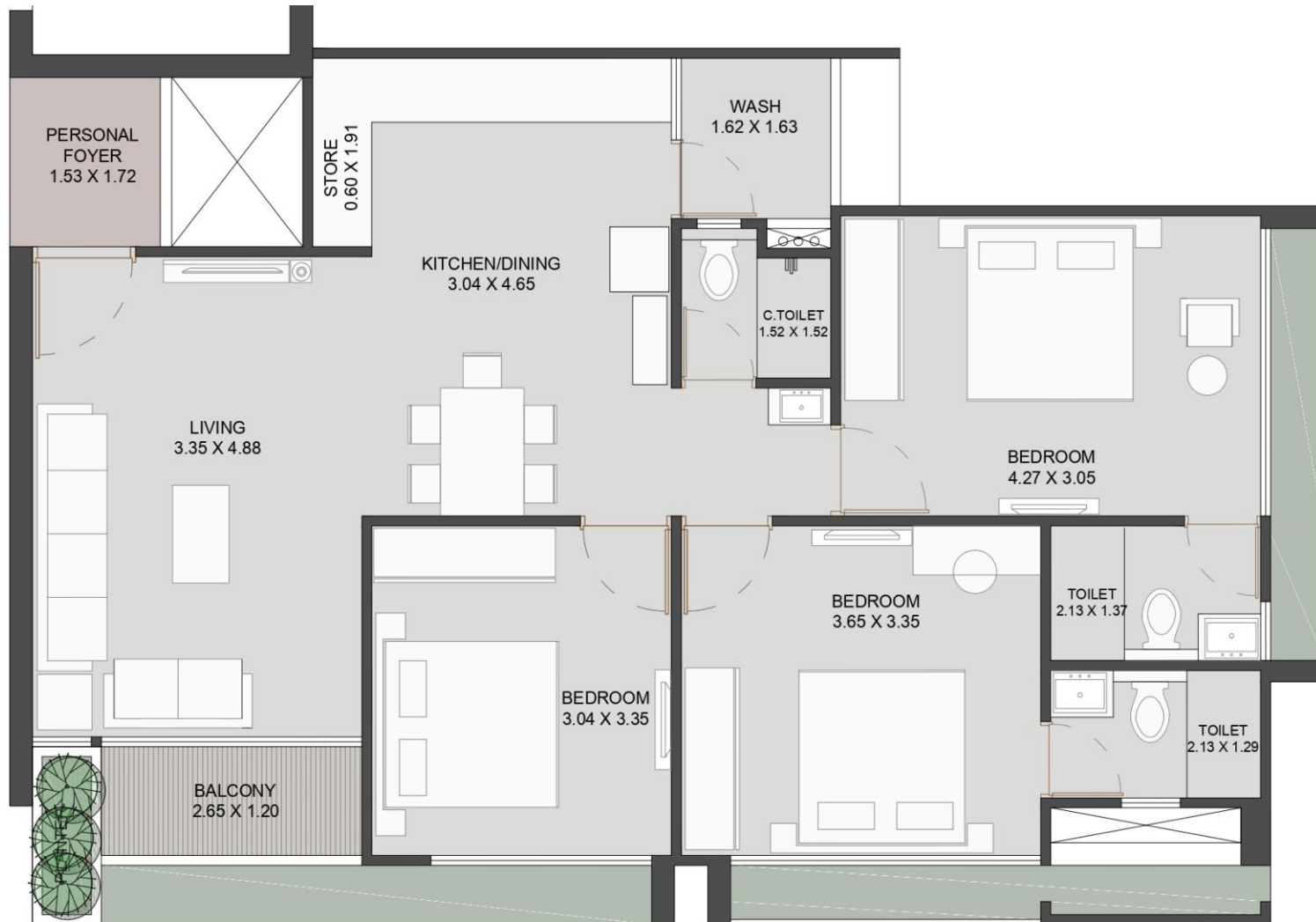
## TYPICAL FLOOR LAYOUT (2ND TO 12TH FLOOR)



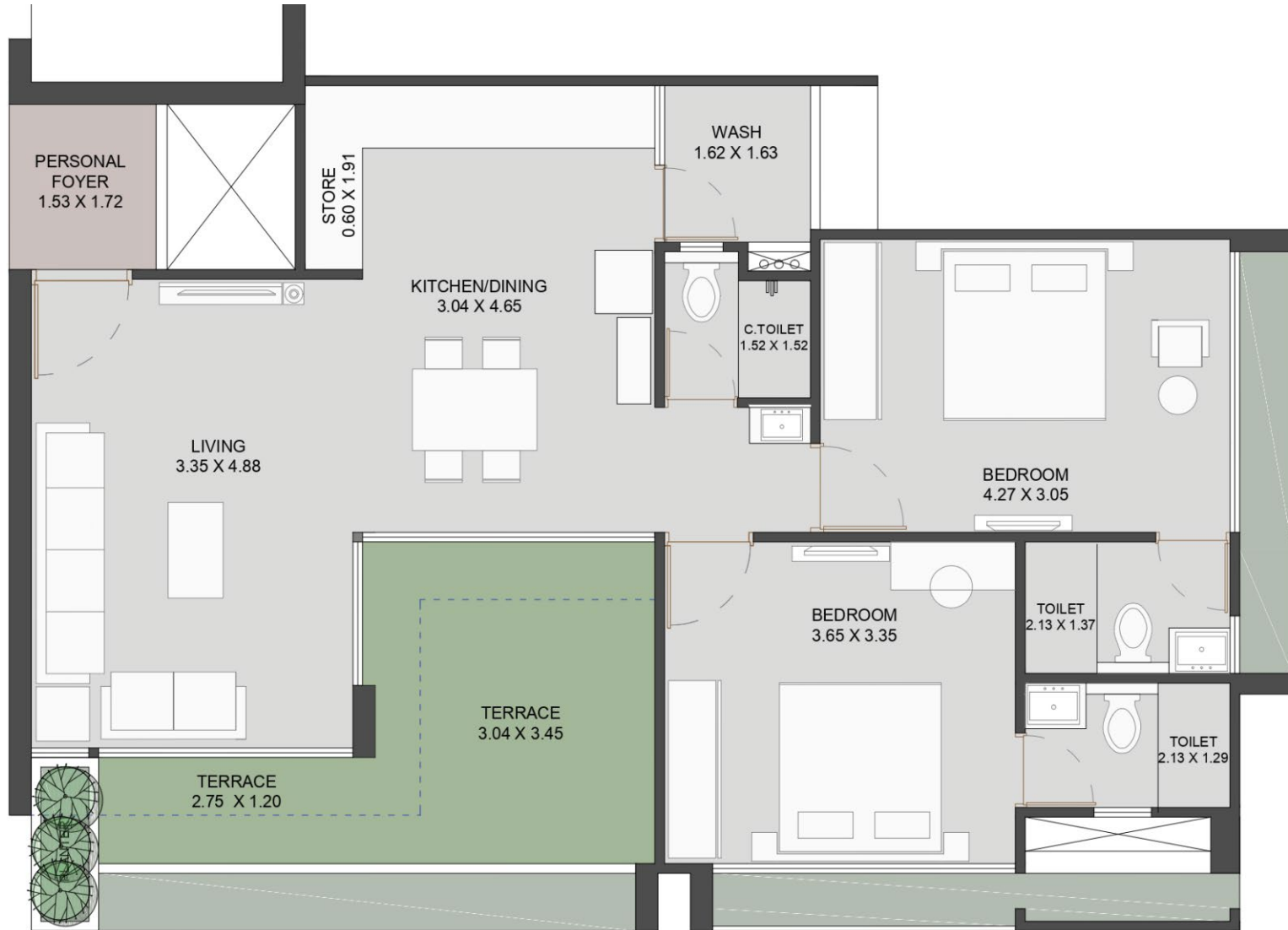
## 13TH FLOOR LAYOUT



## FIRST FLOOR LAYOUT



### 3 BHK UNIT PLAN



## PENT HOUSE - UNIT PLAN



# Specifications

## Structure

Safe & Sound - Quality controlled R.C.C. frame structure and earthquake resistant design as per IS 1893 & IS 4326 criteria

---

## Floors

Vitrified Flooring  
Anti skid Flooring in wet area  
Digital tiles with modern concept up to lintel level in all bathroom & kitchen  
Granite Top Kitchen Platform with S.S. Sink.  
Kota stone shelf in store room and wash area.

---

## Electrification

Concealed Three phase wiring with ISI grade copper flexible fire resistant wire of good quality good quality modular switches with ELCB/MCB

---

## Elevators

Two automatic elevators of reputed brand

---

## Fire

As Per AMC Fire Norms.

## Plaster Work

all external wall texture finished and all internal wall with acrylic based putty finished

---

## Door & Window

Decorative main door with safety locks  
internal door with good quality flush shutter.  
Water resistant & easy to maintain anodized aluminum sliding windows for modern look & better efficiency of A.C. & Sound Proofing.

---

## Plumbing & Sanitation

Corrosion free & leak proof CPVC /UPVC pipe & fittings  
Bath fitting of reputed brand with ceramic cartridge & quarter turn series.

---

## Waterproofing

Waterproofing in all toilets & terrace area  
Chine mosaic in all terraces for heat reflection.

---

## Gas

Adani / Sabarmati Gas Line.



## PRAMUKH 52

Survey Number 864,  
Behind Shantivan Bunglow,  
Adalaj, Gandhinagar - 382421



Project By

# Ekta Infra

Project Finance By



Location

